



Bicycle COLUMBUS

bicyclecolumbus.org



Mission

Bicycle Columbus 1) promotes safe walking and bicycling for transportation and recreation and 2) advocates for improved bicycle and pedestrian conditions in Columbus, GA.

1. ADVOCACY	<ul style="list-style-type: none"> • <i>SS4A Action Plan</i> • <i>Complete Streets Policy and Alternative Transportation Plan</i> • <i>Voice of cyclists and pedestrians for safe streets</i>
2. OUTREACH and EDUCATION	<ul style="list-style-type: none"> • <i>Monthly Newsletter (about 700 subscribers)</i> • <i>Free Bike Wash and Safety Check</i> • <i>Distribution of safe cycling materials and kit</i> • <i>Raising public awareness</i> • <i>Bike Month / B2WD / Ride with the Mayor / ROS</i>
3. EVENTS	<ul style="list-style-type: none"> • <i>MLK Day Ride</i> • <i>Midtown Art Ride / Midtown Bikearound</i> • <i>Juneteenth Bike Ride</i>
4. PARTNERSHIPS	<p><i>Dragonfly Trails / Midtown Columbus / Safe Kids Columbus / RVRC / Columbus Consolidated Govt / Go Georgia / Columbus-PC MPO / Sumter Cycling / Local Bike Shops / Columbus Police Dept / Fort Benning / GDOT / & More!</i></p>

What does Bicycle Columbus do?



Columbus

1. ADVOCACY Bicycle Friendly Community

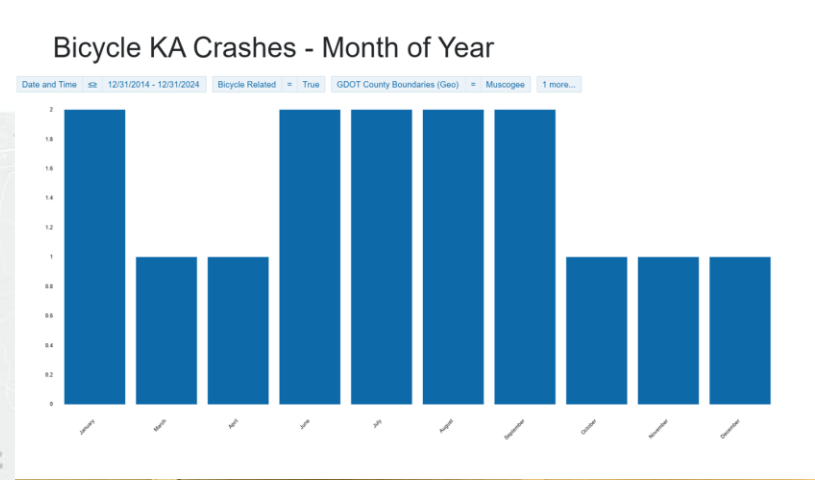
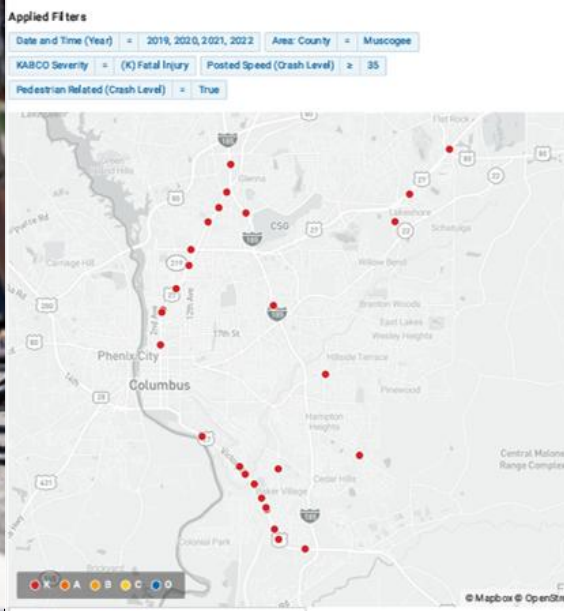


Share Your Input

SAFETY ACTION PLAN

PUBLIC MEETING **COLUMBUS**
Tuesday, Sept 16, 4-6pm
Columbus Public Library
(3000 Macon Rd)

SAFE STREETS FOR ALL



SURVEY

MAP



1. ADVOCACY
through community outreach



2. OUTREACH & EDUCATION: Bike Wash & Safety Checks, Helmets



2. OUTREACH & EDUCATION: Bike Month – Ride with Mayor



2. OUTREACH & EDUCATION: Bike Month – Bike to Work Week and Ride of Silence



3. EVENTS:

Martin Luther King Jr. Day Ride



3. EVENTS: Juneteenth Ride



3. EVENTS:

Midtown Art Ride and Midtown Bike Around



4: PARTNERSHIPS: Support Partners for Safety Education Trainings



4. PARTNERSHIPS: Bicycle Repair Stations



4. PARTNERSHIPS: Assist CCG with Community Engagement



Full Time Executive Director *(pending GOHS grant news)*

FUNDING

LEADERSHIP

ADVOCACY

OUTREACH and EDUCATION

EVENTS

PARTNERSHIPS

PLANS FOR THE FUTURE



MIDTOWN, INC.

Children's Bicycle Playground at Dinglewood Park

13th Street

Wercoba Creek

Ground Breaking
Nov 19, 10 am!

LEGEND

- ① BICYCLE PLAYGROUND
- ② BEGINNER SKILLS TRAILS AND FEATURES
- ③ INTERMEDIATE SKILLS TRAILS AND FEATURES
- ④ BEGINNER LINEAR PUMP TRACK (CONCRETE)
- ⑤ INTERMEDIATE PUMP TRACK (CONCRETE)
- ⑥ PARKING
- ⑦ RAIN GARDENS (TO BALANCE SITE VOLUME (N

**SCHEMATIC DESIGN SHALL ONLY INFORM "ORDER OF MAGNITUDE" COST OPINION. FURTHER STUDY AND DESIGN IS REQUIRED FOR DETAILED COST ESTIMATING.

Warren Williams

Bicycle Playground

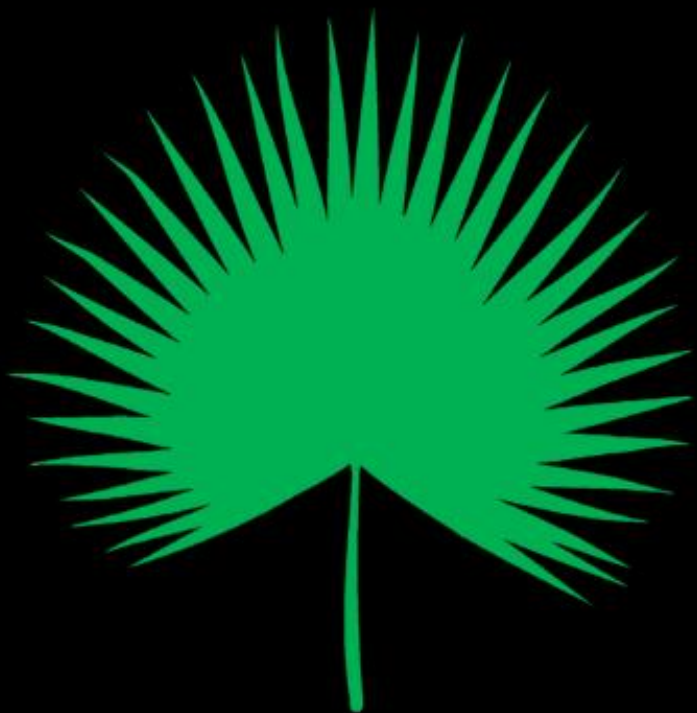


Pump Track



Skills Features





STANDING BOY TRAILS



STANDING BOY TRAILS

TRAIL DESCRIPTIONS



HIKING

These narrow, hand built, and rugged trails offer more of a traditional, backcountry hiking and trail running experience. Bikes are not allowed on these trails.



TROADS

These old road beds offer a flatter, wider, and smoother surface. Bikers are asked to use these paths only for climbing and traversing.



MULTIUSE

These trails are designed to accommodate both bikers as well as foot traffic, and have more pronounced grade reversals, numerous rock features (blue and black), and other similar features.



GRAVITY

These trails are highly bike optimized and do not have any design features intended to manage speed. They offer a higher-speed and entirely bike-optimized experience.



GRAVITY ZONE

These bike-park style lines utilize boulders and other large rock to create the most difficult features in the trail system. The short length of the lines, number of optional features, and short climb back up impart the feel of an advanced skills area.

TRAIL DIFFICULTY



GREEN / EASIEST

Relative to the blue and black trails, these trails typically have a wider tread, gentler climbs and descents, more open switchbacks, and fewer rocks and roots.



BLUE / MORE DIFFICULT

These trails provide challenging terrain, with a narrow tread, steep grades, substantial rock, and other obstacles.



BLACK / MOST DIFFICULT

These trails provide the greatest challenge, with unavoidable drops and jumps, more difficult rock features, steeper grades, and in some cases, very narrow or off-camber tread.

Directional Trails (Primary Goods and Bimini)

- Monday, Tuesday, Thursday, and Saturday: Riders counterclockwise (CCW) and Hikers clockwise (CW)
- Wednesday, Friday, and Sunday: Riders clockwise (CW) and Hikers counterclockwise (CCW)

TRAIL TABLES

BIKE ONLY

Trail Name	Type	Difficulty	Miles
Campwampus	GRAVITY	BLACK	0.40
Cyclone Gallop	GRAVITY	BLUE	0.60
Flyin' Shoes	GRAVITY	GREEN	0.35
Kolawa	GRAVITY	BLACK	0.40
Lickety Split	GRAVITY	BLUE	1.30
Moonshine	GRAVITY	BLUE	0.20
Rubin Foot	GRAVITY	BLUE	0.05
See See Rider	GRAVITY	BLACK	0.15
Sky Shark	GRAVITY	BLACK	0.20
Swayzy's	GRAVITY	BLUE	0.30
The Bug	GRAVITY	GREEN	1.00
Wildcat	GRAVITY	DOUBLE BLACK	0.12
Ascending	UPHILL ONLY	BLUE	0.12

HIKING AND MULTIUSE

Trail Name	Type	Difficulty	Miles
Chief North	HIKING		1.30
Chief South	HIKING		1.20
Kinard's North	HIKING		1.00
Kinard's South	HIKING		1.10
LH to Sittin' Pretty	HIKING		0.30
Baseline	TROAD		0.20
Clover	TROAD		0.80
Lonely Hunter Bisector	TROAD		0.40
Quick Draw	TROAD		0.70
Straight Shot	TROAD		0.60
Tower Path	TROAD		0.60
Bimini	MULTI-USE	GREEN	3.80
Chuff	MULTI-USE	BLUE	1.10
Doughboy	MULTI-USE	GREEN	0.70
Heavy Hit	MULTI-USE	BLACK	0.90
Lit Bit	MULTI-USE	GREEN	0.60
Lonely Hunter	MULTI-USE	BLUE	3.50
Primary Goods	MULTI-USE	GREEN	2.80
Primus	MULTI-USE	BLUE	1.20
Scrambled Dog	MULTI-USE	BLACK	0.50
Sittin' Pretty	MULTI-USE	BLUE	1.80
Tie Snake	MULTI-USE	BLACK/BLUE	2.30
Vibrations	MULTI-USE	BLUE	0.30

LEGEND

- TH TRAILHEAD
- P PARKING
- H HUB
- S STREAM
- I IMPROVED ROAD
- H HIKING TRAIL
- T TROAD

MULTIUSE TRAILS

- EASIER TRAIL
- EASIER TRAIL (DIRECTIONAL BY DAY)
- MORE DIFFICULT TRAIL
- MOST DIFFICULT TRAIL

GRAVITY TRAILS

- EASIER TRAIL
- MORE DIFFICULT TRAIL
- MOST DIFFICULT TRAIL
- EXTREMELY DIFFICULT TRAIL



OLD RIVER ROAD

LAKE OLIVER



0' 400' 1,200'













little bellas
mentoring on mountain bikes





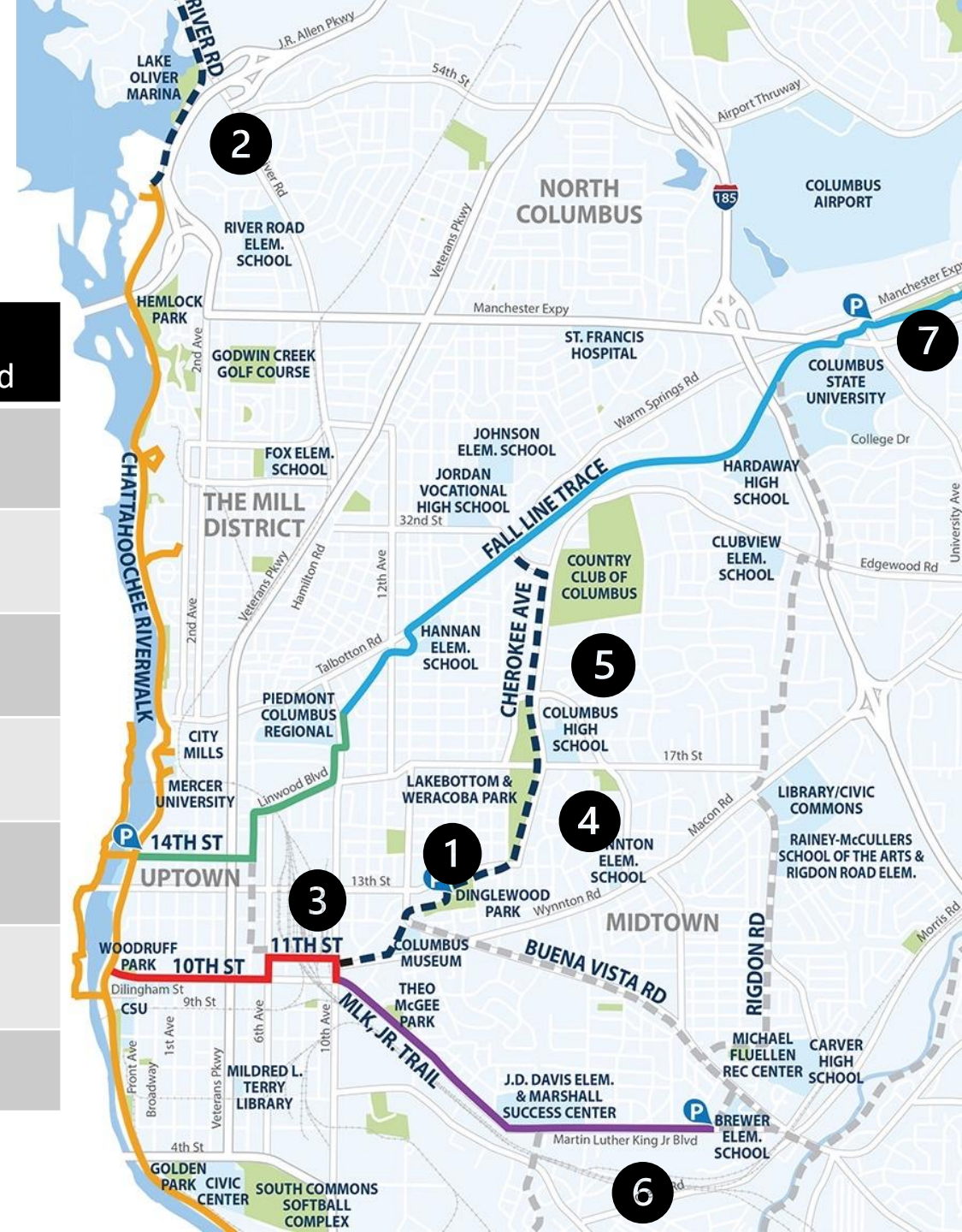
Dragonfly

Trails

Columbus, Georgia

Existing Trail Projects

		Under Design	Preparing Bid	Bid Awarded
1	Dinglewood Park Trail <i>0.88 Mile</i>			X
2	River Road Connector <i>1 Mile</i>		X	
3	5th Avenue Connector <i>1 Mile</i>	X		
4	Lakebottom Park Trail <i>1 Mile</i>	X		
5	Cherokee Avenue <i>1.2 Miles</i>	X		
6	Follow Me Trail Extension <i>0.09 Mile</i>			X
7	Extension to Harris County	On Hold		





Existing Conditions – Wynnton Rd & Bradley Dr





Future Conditions – Wynnton Rd & Bradley Dr



Existing Conditions – 13th St & 18th Ave



Future Conditions – 13th St & 18th Ave



River Road Connector





River Road Connector





River Road Connector

MAN O' WAR TRAIL

Partnering with CCG & RVRC, Harris Co applied for a Rural & Tribal Grant to fund design & engineering for MOW final phase and a Feasibility Study for Fall Line Trace Connector Trail

24 miles Harris Co +
36 miles Muscogee Co
60+ miles combined!

Proposed

- Grey Rock Rd / Bonacre Rd
- Utility ROW

Existing

- Man O'War Trail
- Riverwalk Trail
- Fall Line Trace
- Active Railroad

Fall Line Trace Extension

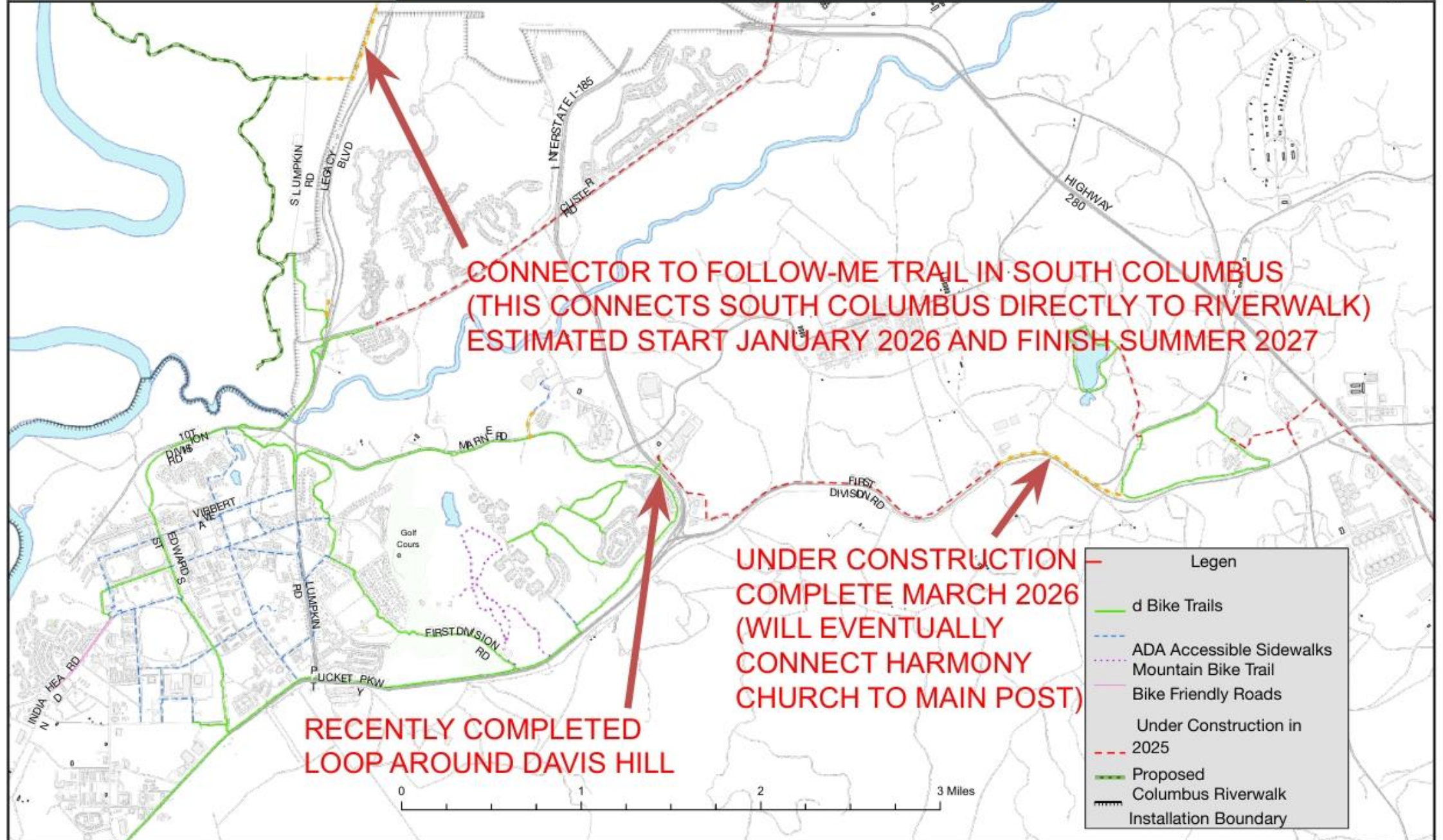




FORT BENNING

FORT BENNING TRAIL SYSTEM – 21 MILES

January 2025





Georgia Department of Transportation



Bicycle COLUMBUS



bicyclecolumbus.org



Mission

Bicycle Columbus 1) promotes safe walking and bicycling for transportation and recreation and 2) advocates for improved bicycle and pedestrian conditions in Columbus, GA.



Calls to Action

- Elect Board of Directors
- Volunteer to help with projects
- Donate financially